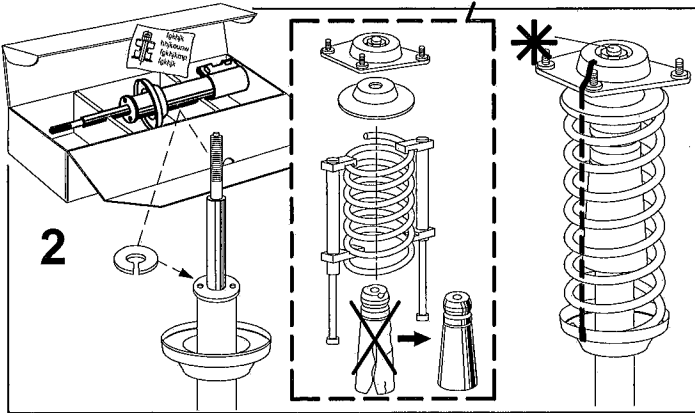
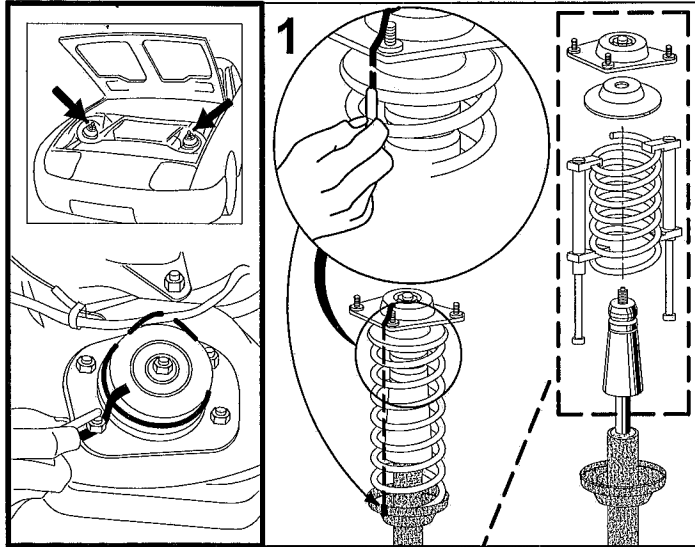


instruction

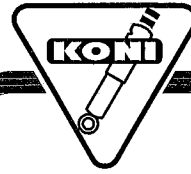
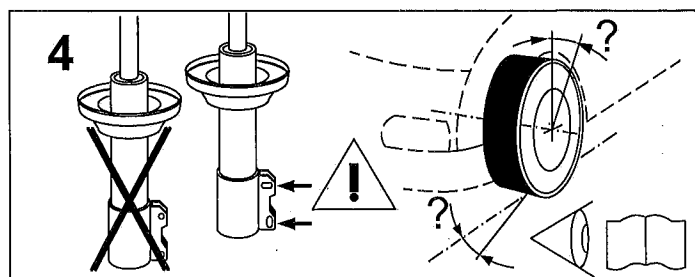
1027 45 14 88
412



3

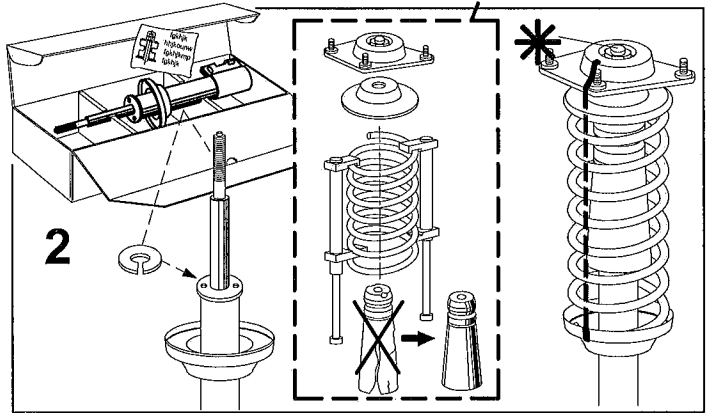
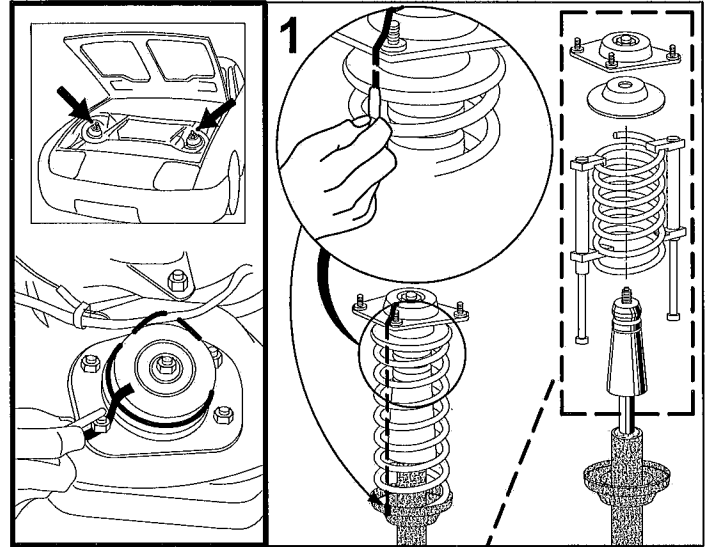
| | M 10 | M 12 | M 14 | M 16 | M 18 |
|--|-----------------------|-----------------------|------------------------|-------------------------|-------------------------|
| | 35 Nm (26 ft. lbs) | 50 Nm (37 ft. lbs) | 80 Nm (59 ft. lbs) | 120 Nm (89 ft. lbs) | 165 Nm (126 ft. lbs) |
| | 45 Nm (33 ft. lbs) | 80 Nm (59 ft. lbs) | 125 Nm (92 ft. lbs) | 180 Nm (133 ft. lbs) | 250 Nm (185 ft. lbs) |
| | — | 50 Nm (37 ft. lbs) | 80 Nm (59 ft. lbs) | 120 Nm (89 ft. lbs) | 165 Nm (126 ft. lbs) |

M
...mm



instruction

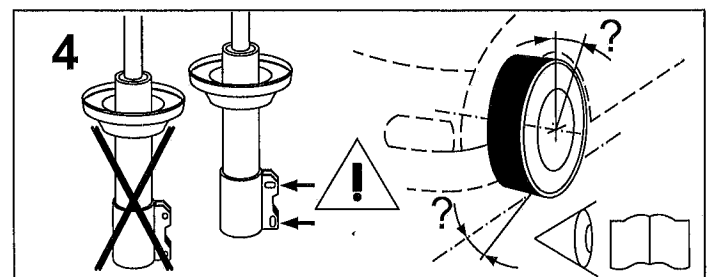
1027 45 14 88
412

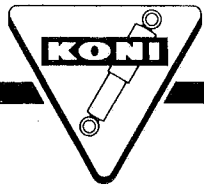


3

| | M 10 | M 12 | M 14 | M 16 | M 18 |
|--|-----------------------|-----------------------|------------------------|-------------------------|-------------------------|
| | 35 Nm (26 ft. lbs) | 50 Nm (37 ft. lbs) | 80 Nm (59 ft. lbs) | 120 Nm (89 ft. lbs) | 165 Nm (126 ft. lbs) |
| | 45 Nm (33 ft. lbs) | 80 Nm (59 ft. lbs) | 125 Nm (92 ft. lbs) | 180 Nm (133 ft. lbs) | 250 Nm (185 ft. lbs) |
| | — | 50 Nm (37 ft. lbs) | 80 Nm (59 ft. lbs) | 120 Nm (89 ft. lbs) | 165 Nm (126 ft. lbs) |

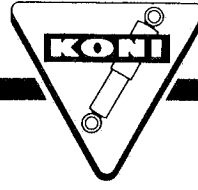
M
...mm





instruction

1027 05 17 67
805

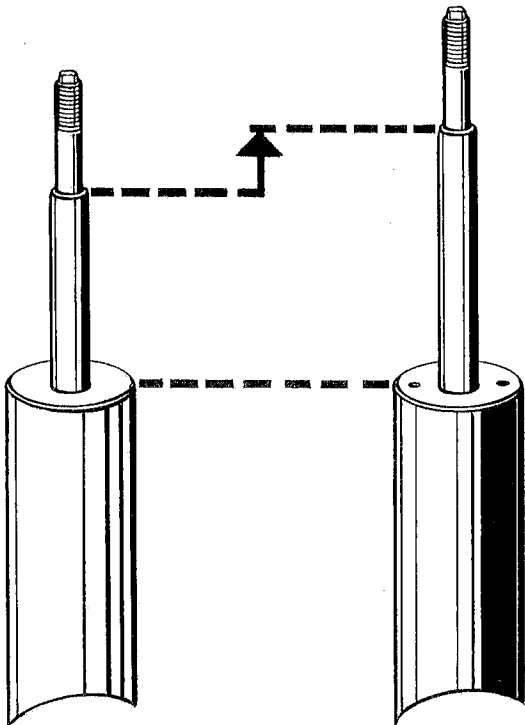


instruction

1027 05 17 67
805

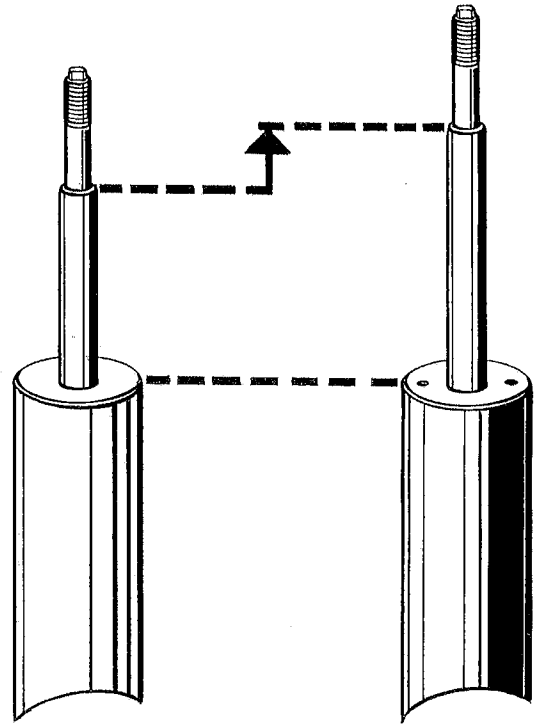
ORIGINAL

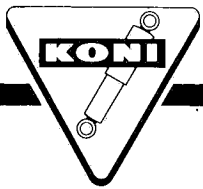
NEW



ORIGINAL

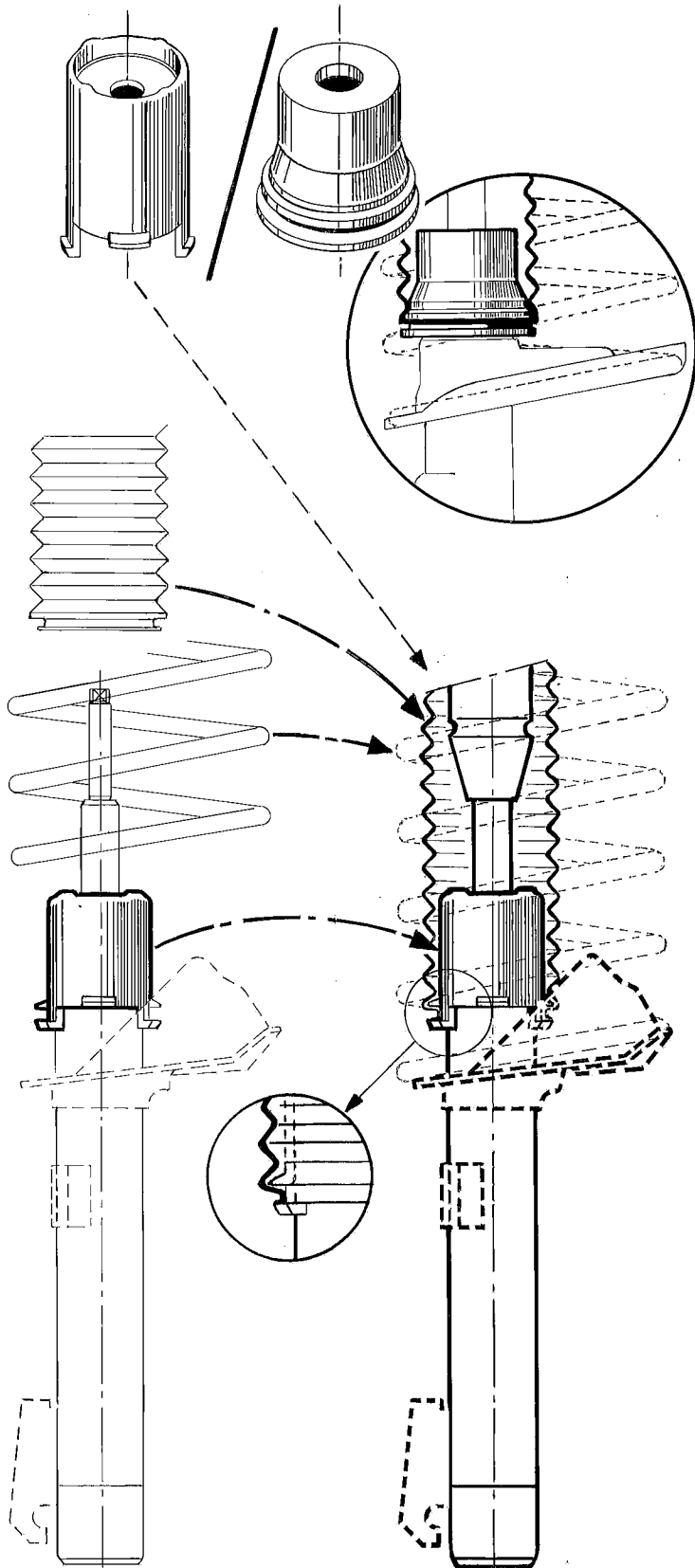
NEW



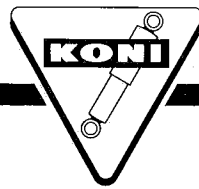


instruction

1027 05 18 78
912

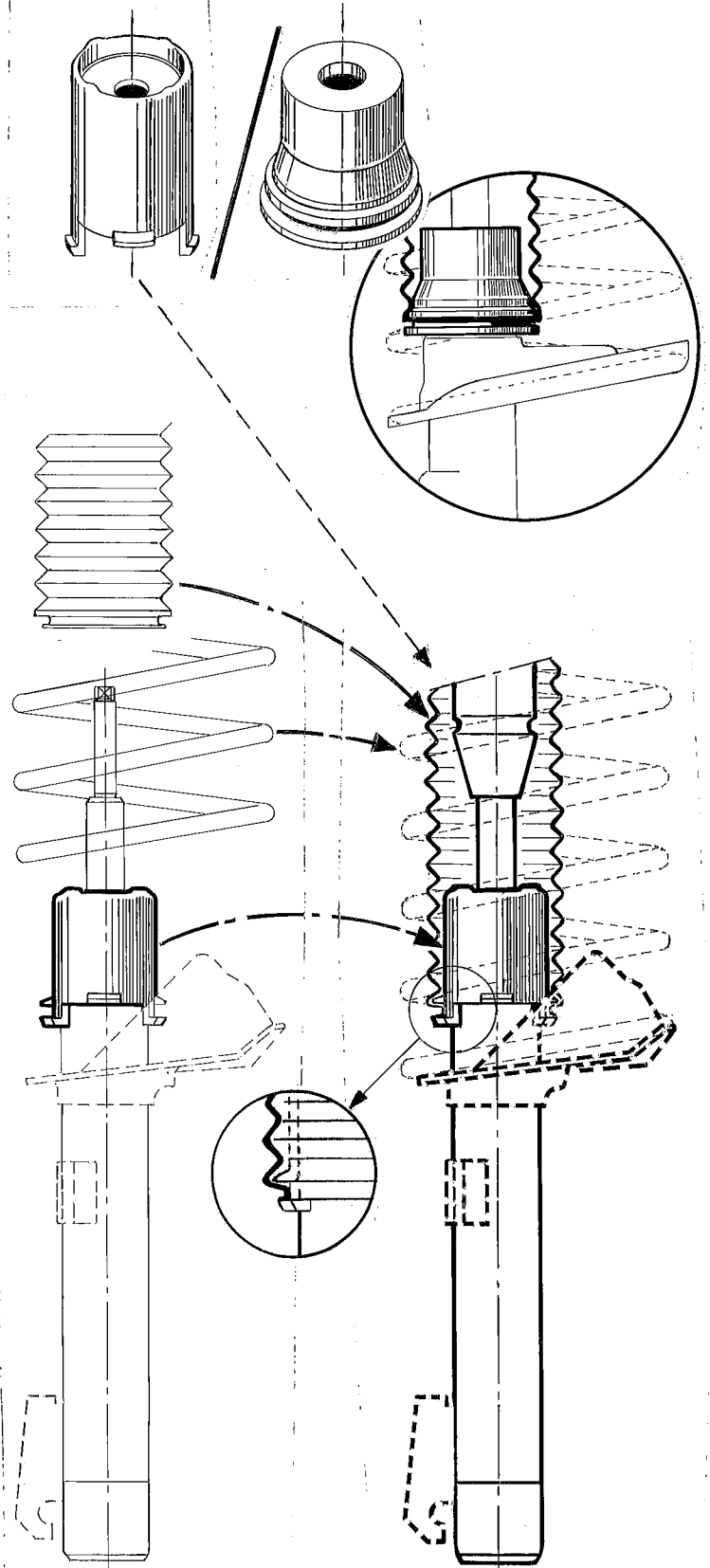


ORIGINAL



instruction

1027 05 18 78
912



ORIGINAL