

I NORME D'USO DESTINATE A PORTATUTTO UNIVERSALI CONFORMI ALLE NORME DIN 75302.

- Effettuato il montaggio del portatutto, dopo alcuni chilometri ricontrrollare il fissaggio di tutte le viti.
- È necessario periodicamente, anche in funzione del fondo stradale, controllare i fissaggi di tutte le viti.
- Attenzione: la stabilità della vettura con portatutto montato può subire alterazioni nel comportamento su strada, nelle curve, nelle frenate ed in presenza di raffiche di vento. Si raccomanda quindi di guidare ed affrontare le curve a velocità moderata e di evitare brusche accelerate o frenate.
- Per motivi di sicurezza e di risparmio carburante è preferibile smontare il portatutto in caso di inutilizzo.
- **ATTENZIONE:** portata massima 90kg distribuiti uniformemente sulle due barre.

Attenzione: controllare sul libretto istruzioni della casa costruttrice la portata massima consentita dalla vostra vettura.

GB USING THE MULTI-PURPOSE RACK PROVIDED FOR BY THE DIN 75302 STANDARD.

- After rack assembly and few miles drive, ensure the bolts have been well tightened.
- Periodically check the tightening of all bolts, with particular reference to the effect of varying road surfaces.
- Caution: if the rack carries any load, vehicle stability may be affected, especially as regards roadholding in bends or in gusts and braking. Therefore, do not take bends at high speed and refrain from braking or accelerating sharply.
- When not in use, the rack should be taken off the car to improve safety and cut down on fuel consumption.
- It is not advisable to use a drive-through car wash with the rack still on top of the vehicle.
- **IMPORTANT:** maximum load 90kg to be distributed evenly between both bars.

Please keep within the load limits as provided for by your car manufacturer (refer to the user's manual of your vehicle).

F MODE D'EMPLOI DES PORTE-BAGAGES UNIVERSELS CONFORMES AUX NORMES DIN 75302.

Monter le porte-bagages: après quelques kilomètres, contrôler le serrage de toutes les vis.

Vérifier périodiquement le serrage de toutes les vis en tenant compte de l'état des routes.

Attention: la voiture équipée de porte-bagages peut subir des modifications dans la tenue de route, dans les virages, durant le freinage et en la présence de rafales de vent. Nous conseillons, par conséquent de conduire et d'aborder les virages à vitesse modérée et d'éviter de freiner et d'accélérer brusquement.

-Pour des raisons de sécurité et d'économie de carburant, il est préférable de démonter le porte-bagages en cas de non utilisation.

- **IMPORTANT:** capacité maximale de charge autorisée 90 kg, répartis uniformément sur les deux barres.

Se conformer aux instructions du constructeur de la voiture en ce qui concerne la charge maximale autorisée du véhicule.

E INSTRUCCIONES DE USO DE LOS PORTATODOS UNIVERSALES CONFORME A LAS NORMAS DIN 75301.

- Efectuado el montaje del portatodo, después de unos kilómetros, verificar que todos los tornillos sigan bien fijados.
- Seré necesario verificar, periódicamente y en función de tipo de carretera, las fijaciones de todos los tornillos.
- Atención: la estabilidad del automóvil con el montaje del portatodo puede sufrir algunos cambios: en curvas, mientras el frenado y si hay ráfagas de viento. Pos eso, se recomienda conducir y girar a velocidad moderada y evitar los virajes bruscos, frenazos y acelerones.
- Por razones de seguridad y ahorro de combustible, se sugiere desmontar el portatodo cuando non sea necesario su uso.
- **IMPORTANTE:** peso máximo 90kg repartidos entre las dos barras.

Atención: verifiquen en el manual de instrucciones de su automóvil la capacidad máxima permitida.

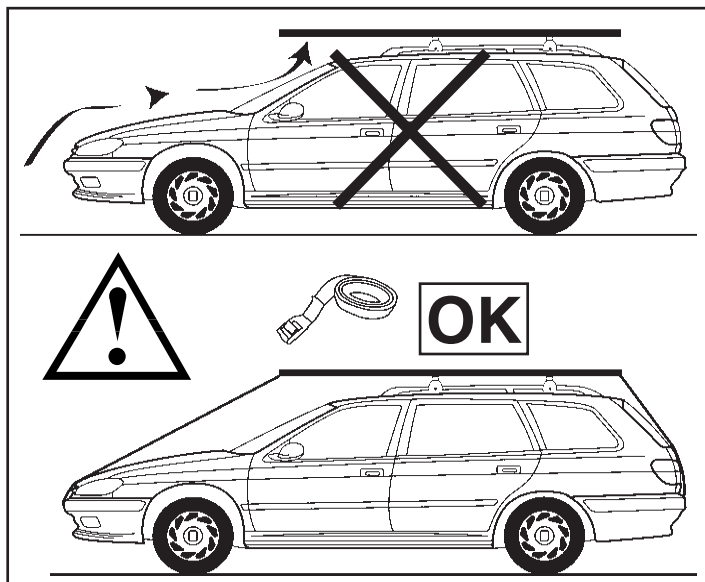
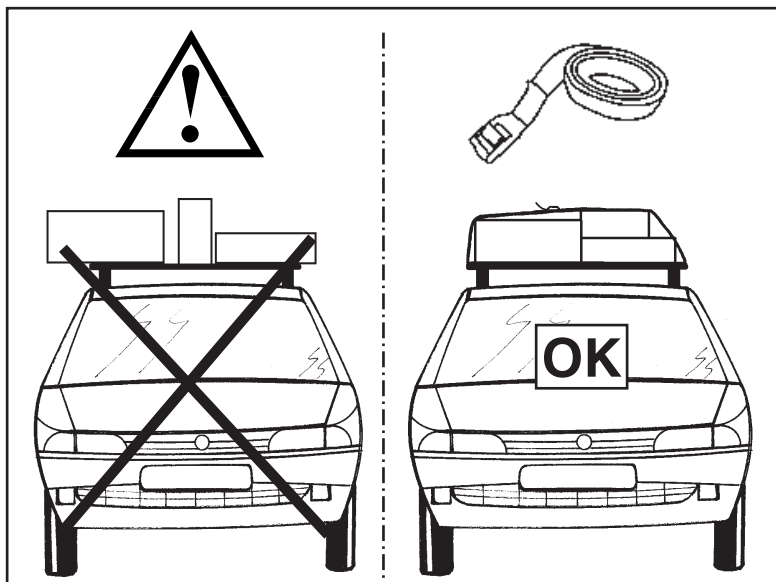
D GEBRAUCHSANWEISUNG FÜR UNIVERSAL-DACHSKITRÄGER IM EINKLANG MIT DIN 75302.

- Fahren Sie nach Befestigung des Skiträgers einige Kilometer und überprüfen Sie dann nochmals alle Schrauben auf sichere Befestigung.
- Abhängig von der Ebenheit der Straßendecke sind sämtliche Schrauben regelmäßig nach zu kontrollieren.
- Achtung: Bei montiertem Dach-Skiträger kann sich das Fahrverhalten des Fahrzeugs ändern, insbesondere in Kurven, beim Bremsen und bei Windböen, Es empfiehlt sich daher, allgemein sowie speziell in Kurven mit mäßiger Geschwindigkeit zu fahren und abruptes Beschleunigen bzw. Bremsen zu vermeiden.
- Aus Sicherheitsgründen und zur Minderung des Kraftstoffverbrauchs sollten Sie den Dach-Skiträgers möglichst abmontieren wenn er nicht benötigt wird.
- **ACHTUNG:** (max 90 kg) In der Gebrauchsanweisung des Fabrikanten die Höchstbelastbarkeit Ihres Wagens nachschlagen.

NL GEBRUIKSNORMEN VAN DE BAGAGEDRAGERS IN OVEREENSTEMMING MET DIN 75302 NORMEN.

- Controleer, eens de bagagedrager volledig is gemonteerd, na enkele kilometers of alle schroeven goed vastzitten.
- Kijk achieraf en volgens de aard van de wegen die bereiden worden regelmatig na of alle schroeven wel degelijk vastzitten.
- Let op: na het monteren van de bagagedrager kan de stabiliteit van de wagen verschillen, vooral in bochten, bij het remmen en bij krachtige windstoten. Wij raden dan ook aan voorzichtig te rijden, bochten met verminderde snelheid te nemen, niet te bruusk te nemen en niet te snel op te trekken.
- Om veiligheidsredenen en om brandstof te besparen is het aangeraden de bagagedrager na gebruik weer van uw auto te halen.
- **BELANGRUK:** maximum belasting 90 kg gelijkmatig verdeeld over de hele bagagedrager de maximum belasting van uw wagen.

Aangegeven door de autoconstructeur in de handleiding van de wagen, niet overschrijden.



1

(D) EINSCHIEBEN
(GB) INSERT
(F) ENFILER
(E) CUBRIR
(IT) INSERIRE
(NL) BEVESTIG

3

(D) DÜBEL
(GB) INSERT
(F) TAMPON
(E) CUÑA
(IT) INSERTO
(NL) INVOEGSTUK

(D) SIEHE DIE BEILIEGENDE ANWENDUNGSTABELLE
(GB) SEE THE ATTACHED APPLICATION TABLE
(F) VOIR LE TABLEAU D'APPLICATION ATTACHE'
(E) CONSULTE LA TABLA DE APLICABILIDAD ADJUNTA
(IT) VEDERE LA TABELLA APPLICABILITA' ALLEGATA
(NL) KIJK IN DE BIJGEVOEGDE APPLICATIETABEL

SI/YES/YA/OUI

NO/NO/NEIN/NON

(D) ENTFERNEN
(GB) REMOVE
(F) ENLEVER
(E) ELIMINAR
(IT) TOGLIERE
(NL) VERWIJDEREN

4

(D) BIEGEN
(GB) BEND
(F) PLIER
(E) DOBLAR
(IT) PIEGARE
(NL) BUIGEN

A

(D) EINSCHIEBEN
(GB) INSERT
(F) ENFILER
(E) CUBRIR
(IT) INSERIRE
(NL) BEVESTIG

B

(x4)

2

(D) SIEHE DIE BEILIEGENDE ANWENDUNGSTABELLE UM DEN RICHTIGEN KUPPLER ZU WÄHLEN
(GB) SEE THE ATTACHED APPLICATION TABLE FOR THE COUPLER CHOICE
(F) VOIR LE TABLEAU D'APPLICATION ATTACHE' AU FIN DE CHOISIR LE TIRANT LE PLUS CORRECT
(E) CONSULTE LA TABLA DE APLICABILIDAD ADJUNTA PARA SELECCIONAR LOS TIRANTE APROPRIADO
(IT) VEDERE LA TABELLA APPLICABILITA' ALLEGATA PER LA SCELTA DEL TIRANTE
(NL) KIJK IN DE BIJGEVOEGDE APPLICATIETABEL VOOR DE JUISTE KEUZE MONTAGEBEUGELS

A

(D) ABSCHRAUBEN
(GB) UNSCREW
(F) DEVISSER
(E) AFLOJAR
(IT) SVITARE
(NL) OPENSCHROEVEN

(D) ZUSAMMENBAU DER KOPPLER 2
(GB) HOW TO ASSEMBLE COUPLER 2
(F) MONTAGE TIRANT 2
(E) COMO MONTAR LOS TIRANTE 2
(IT) MONTAGGIO TIRANTE 2
(NL) MONTAGE VAN DE TREKSTANG 2

(D) ERSETZEN
(GB) TO REPLACE
(F) REMPLACER
(E) APRETAR
(IT) SOSTITUIRE
(NL) VERVANGEN

B

(D) FESTSCHRAUBEN
(GB) TO SCREW
(F) VISSER
(E) APRETAR
(IT) AVVITARE
(NL) VASTSCHROEVEN

C

(x4)

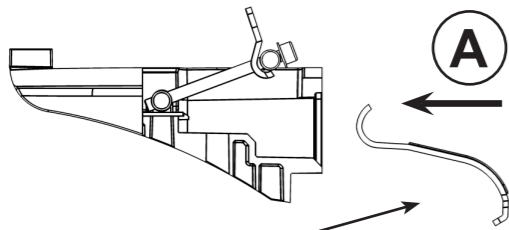
5

(D) EINSCHIEBEN
(GB) INSERT
(F) ENFILER
(E) CUBRIR
(IT) INSERIRE
(NL) BEVESTIG

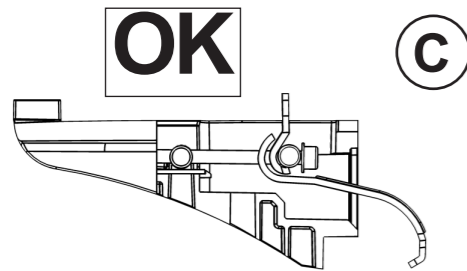
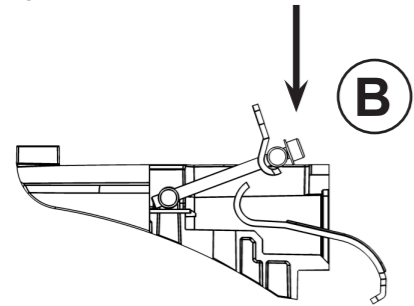
A

B

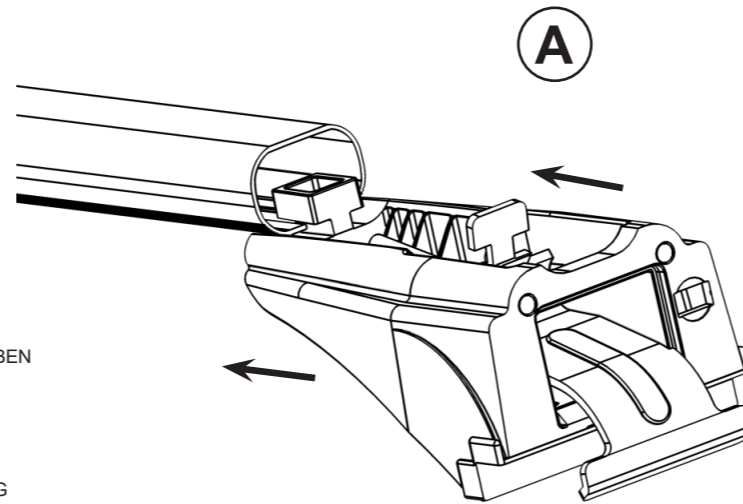
(x4)

6

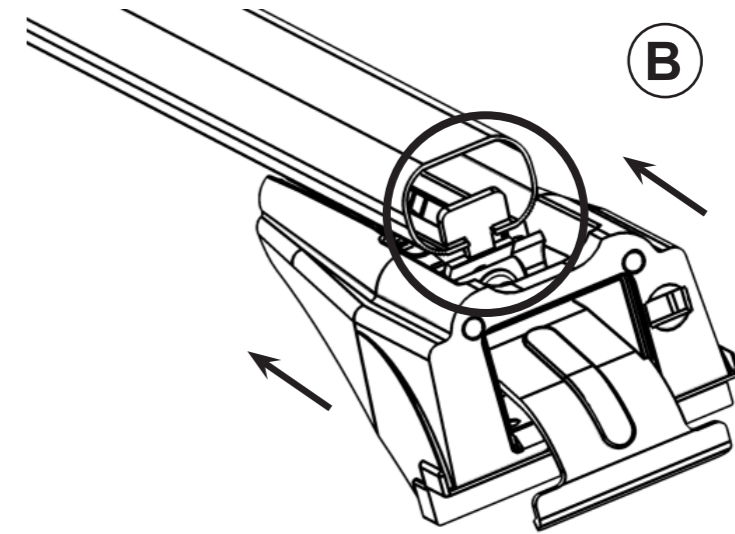
(D) EINSCHIEBEN
 (GB) INSERT
 (F) ENFILER
 (E) CUBRIR
 (IT) INSERIRE
 (NL) BEVESTIG



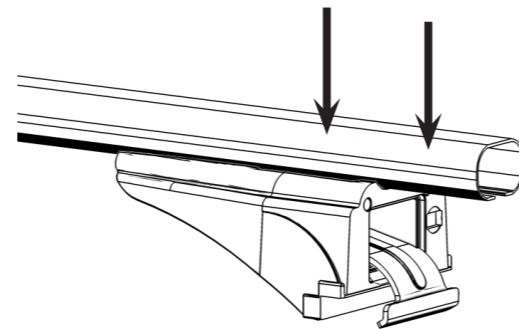
(x4)

7

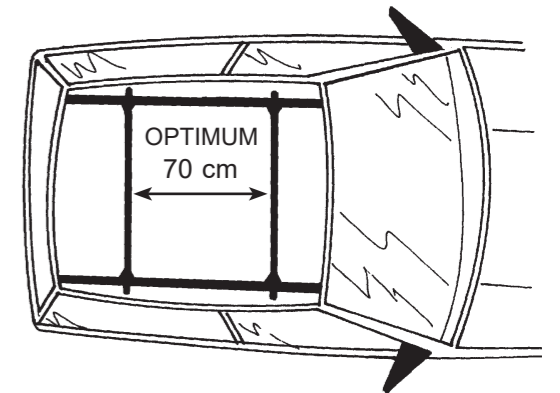
(D) EINSCHIEBEN
 (GB) INSERT
 (F) ENFILER
 (E) CUBRIR
 (IT) INSERIRE
 (NL) BEVESTIG



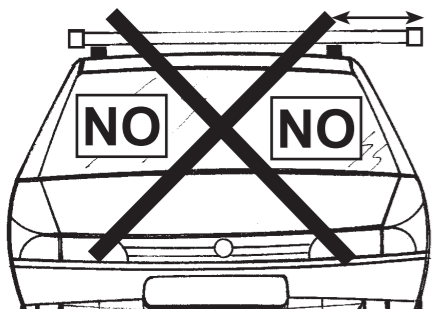
(x4)

8

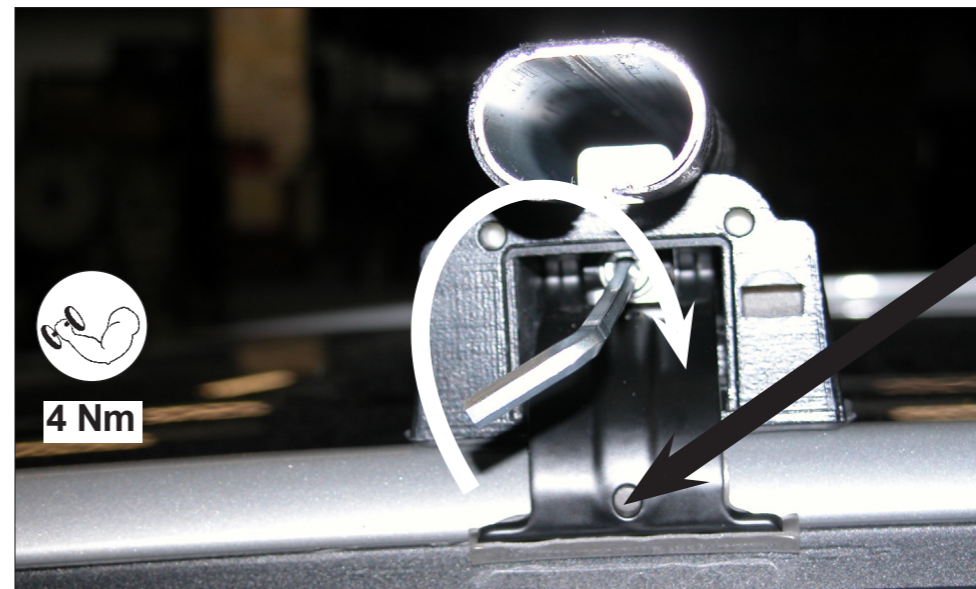
RAILS

9**10**

(D) LASTENTRÄGER AUF DEM DACH ZENTRIEREN
 (GB) CENTRE THE UNIVERSAL BAR CARRIER ON THE ROOF
 (F) CENTRER LA BARRE DE TOIT SUR LE TOIT
 (E) CENTRAR EL PORTAEQUIPAJES SOBRE EL TECHO
 (IT) CENTRARE IL P. TUTTO SUL TETTO
 (NL) PLAATS DE UNIVERSELE DRAGER IN HET MIDDEN VAN HET DAK

**11**

(D) FESTSCHRAUBEN
 (GB) TO SCREW
 (F) VISSER
 (E) APRETAR
 (IT) AVVITARE
 (NL) VASTSCHROEVEN

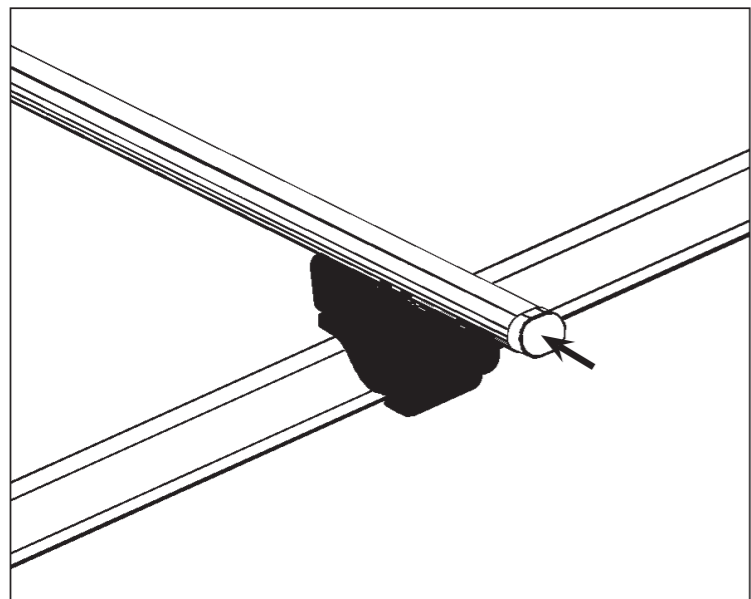


(D) DRÜCKEN
 (GB) TO PUSH
 (F) APPUYER
 (E) PRESIONAR
 (IT) PREMERE
 (NL) DRUKKEN



(x4)

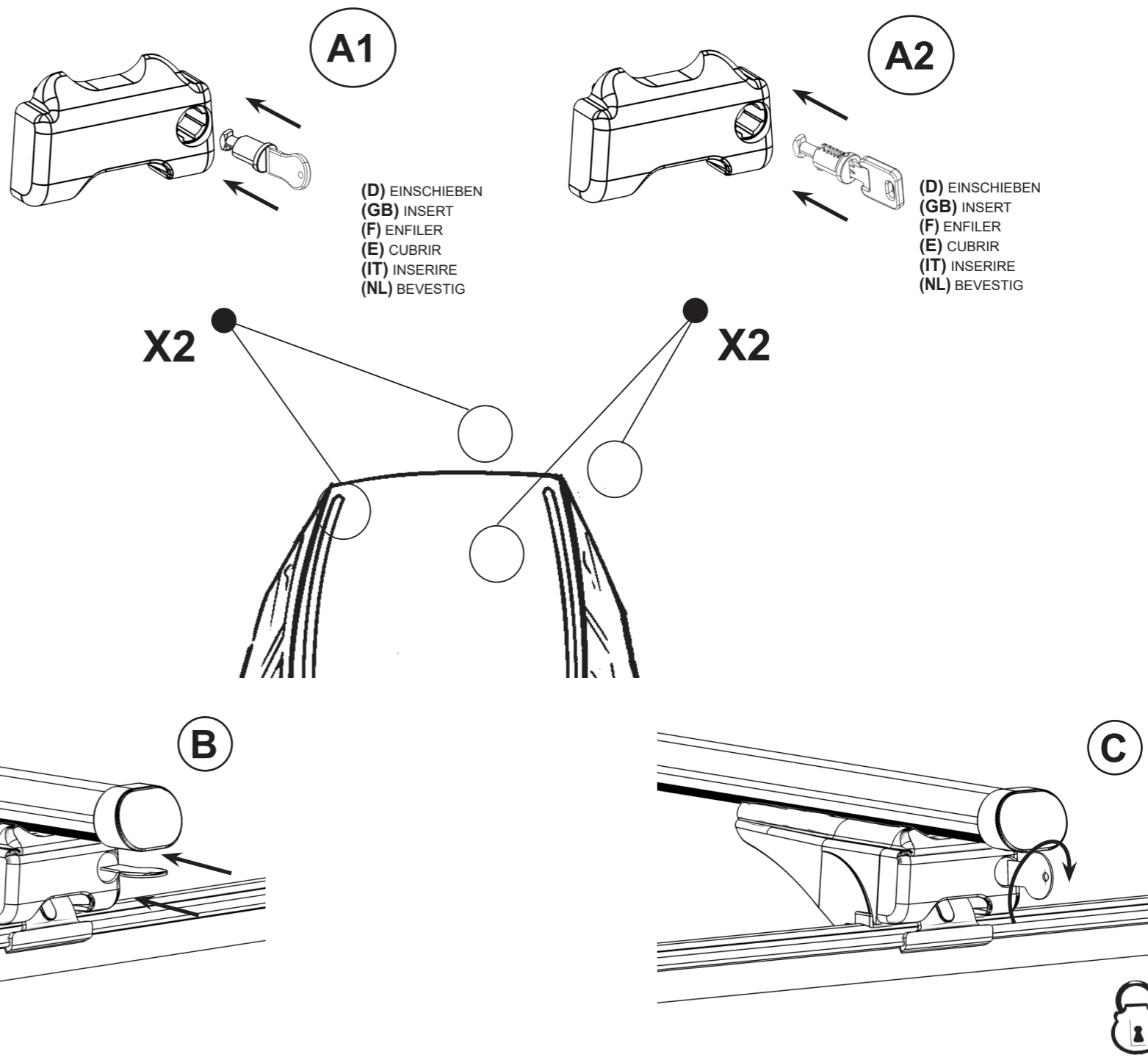
12



(D) EINSCHIEBEN
 (GB) INSERT
 (F) ENFILER
 (E) CUBRIR
 (IT) INSERIRE
 (NL) BEVESTIG

(x4)

13



A1

A2

X2

X2

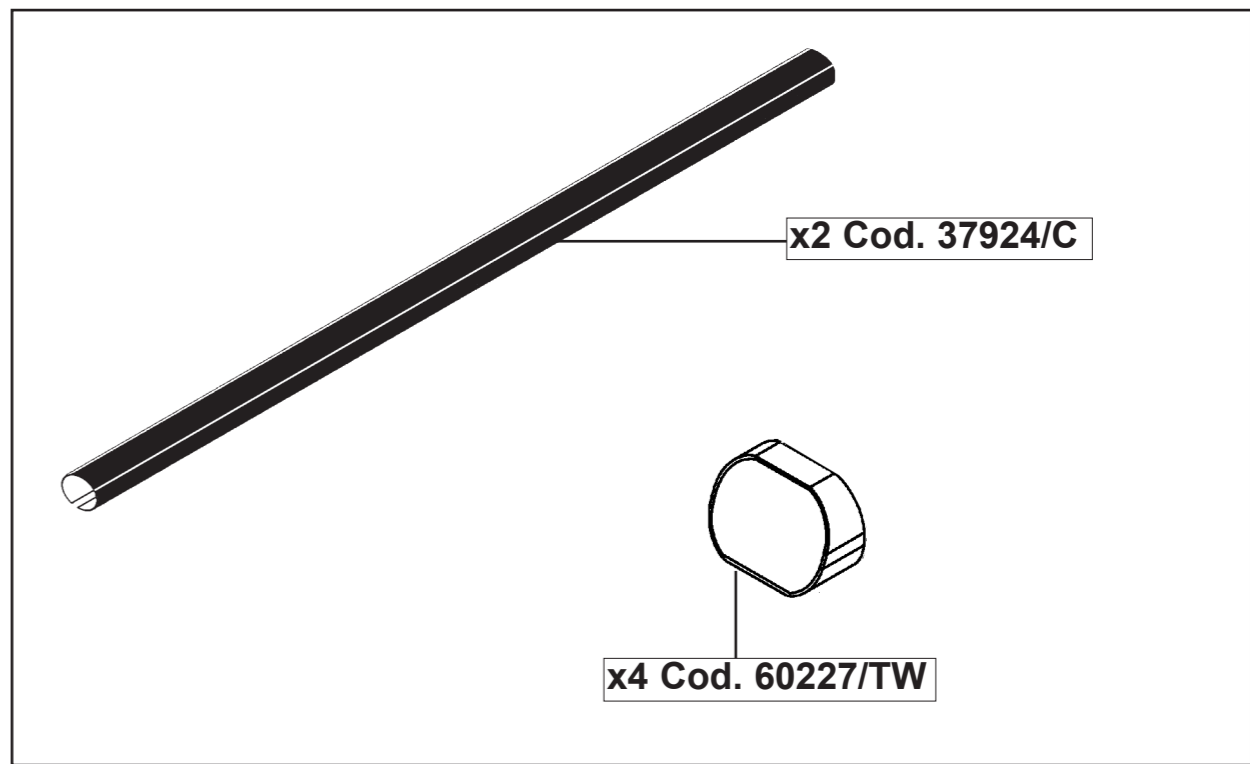
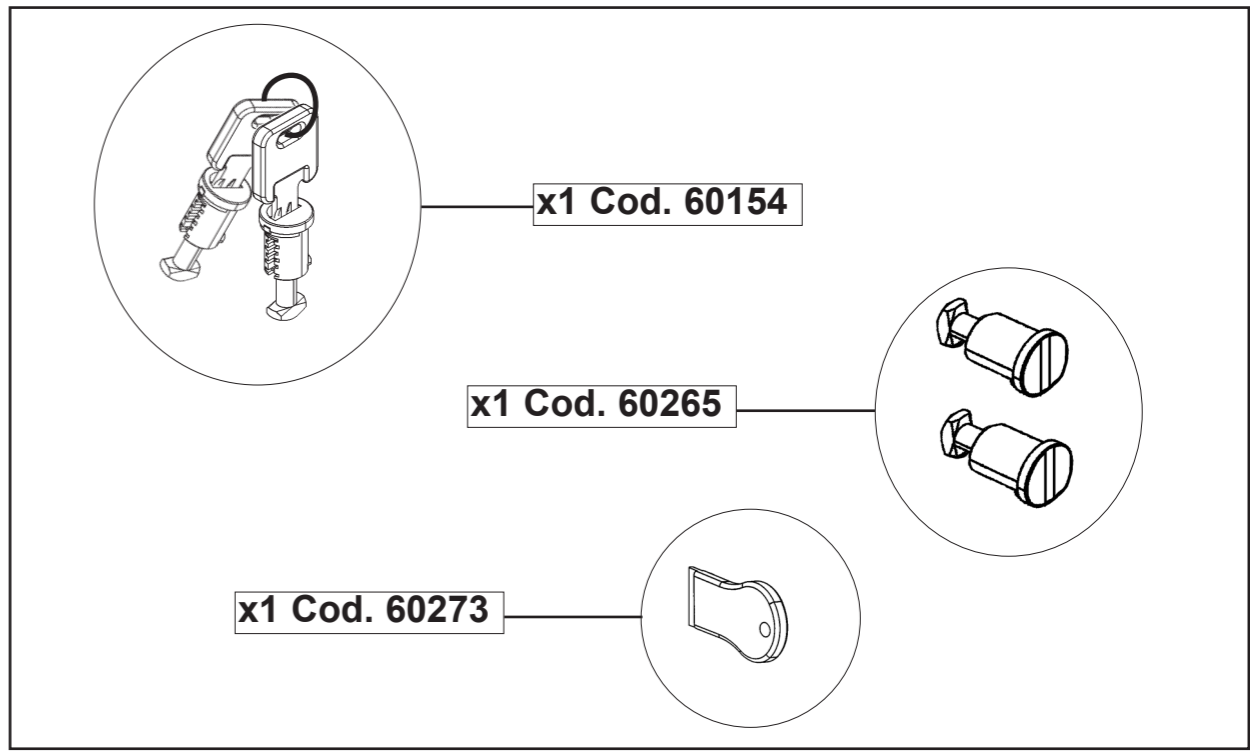
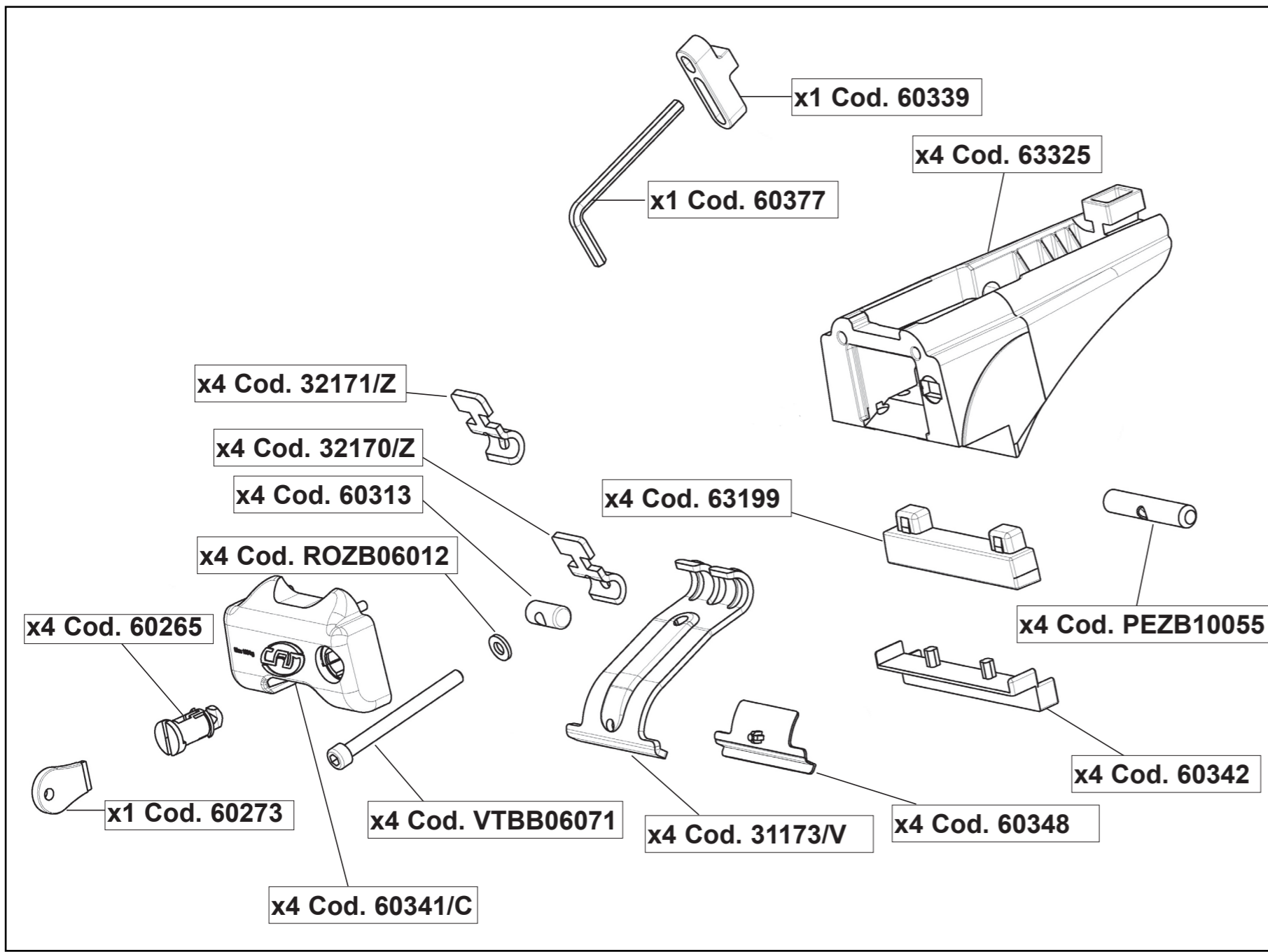
B

C

(x4)

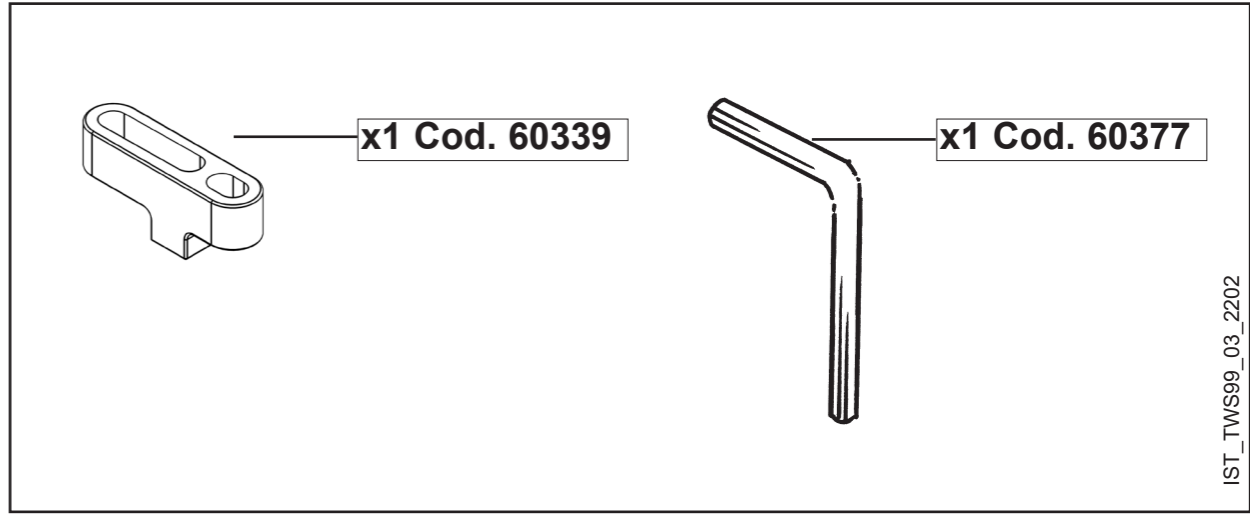
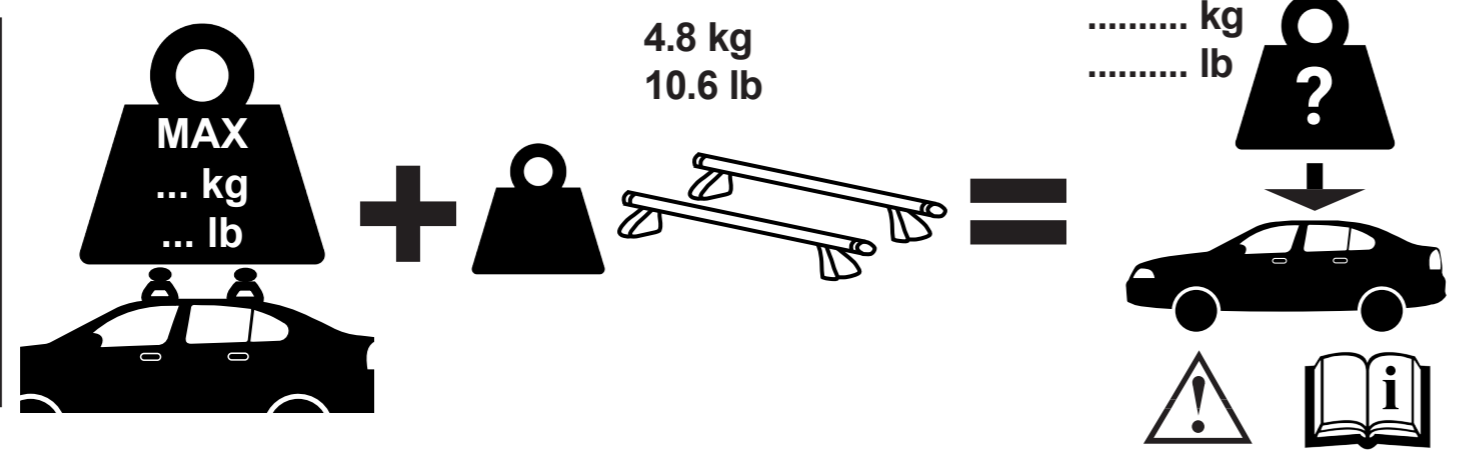
(D) EINSCHIEBEN
 (GB) INSERT
 (F) ENFILER
 (E) CUBRIR
 (IT) INSERIRE
 (NL) BEVESTIG

(D) EINSCHIEBEN
 (GB) INSERT
 (F) ENFILER
 (E) CUBRIR
 (IT) INSERIRE
 (NL) BEVESTIG



(IT) SI RACCOMANDA DI NON SUPERARE IL CARICO MASSIMO SUL TETTO AUTORIZZATO DAL COSTRUTTORE DEL VEICOLO.
(GB) IT IS RECOMMENDED NOT EXCEED THE MAXIMUM ROOF LOAD AUTHORIZED BY THE VEHICLE MANUFACTURER.
(E) SE RECOMIENDA NO SUPERAR LA CARGA MÁXIMA DEL TECHO AUTORIZADA POR EL FABRICANTE DEL VEHÍCULO.
(D) ES WIRD EMPFOHLEN, DIE VOM FAHRZEUGHERSTELLER GENEHMIGTE MAXIMALE DACHLAST NICHT ZU ÜBERSCHREITEN.
(F) IL EST RECOMMANDÉ DE NE PAS DÉPASSER LA CHARGE MAXIMALE SUR LE TOIT AUTORISÉE PAR LE CONSTRUCTEUR DU VÉHICULE.
(NL) HET WORDT AANBEVOLEN DE DOOR DE VOERTUIGFABRIKANT TOEGESTANE MAXIMALE DAKBELASTING NIET TE OVERSCHRIJDEN.

(IT) VEDERE LA TABELLA APPLICABILITA' ALLEGATA
(GB) SEE THE ATTACHED APPLICATION TABLE
(E) CONSULTE LA TABLA DE APLICABILIDAD ADJUNTA
(D) SIEHE DIE BEILIEGENDE ANWENDUNGSTABELLE
(F) VOIR LE TABLEAU D'APPLICATION ATTACHEE
(NL) KIJK IN DE BIJGEVOEGDE APPLICATIETABEL



(IT) MODELLI AUTO (GB) CARS (E) COCHES (D) WAGEN (F) VOITURES (NL) AUTO (P) MODELO AUTO (H) AUTO TIPIJS (PL) MODELE SAMOCHODÓW (SLO) MODEL AVTOMOBILŮV (HR) MODELI AUTA	(IT) INSERTO (GB) INSERT (E) CUNA (D) DÜBEL (F) TAMPON (NL) INVOEGSTUK (H) BESZURÁS (PL) WKŁADKA (SLO) VLOŽKA (HR) UMETAK	(IT) TIRANTE (GB) COUPLER (E) TIRANTE (D) KOPPLER (F) TIRANT (NL) TREKSTANG (H) RÓZGZTÓ BETÉT (PL) ŁAPKA (SLO) SPOJ (HR) ZAKAČKA	(IT) PORTATA MAX (GB) MAX LOAD (E) CARGA MÁXIMA (D) MAXIMALE (F) CHARGE MAXIMALE (NL) BELASTING (H) TERHERBÍRÁS (PL) ŁADOWNOŚĆ (SLO) VRHUNSKA NOSILNOST (HR) NOSIVOST
ALFA ROMEO 159 SW (06>11) Rail aperti/Open rails/Mit Reling/Railing	SIYES/YA/OU	2	75 Kg
AUDI A3 Sportback 5P (04>08) Rail chiusi/Integrated rails/Geschlossener Reling/Railing integrés	SIYES/YA/OU	1	75 Kg
AUDI A3 Sportback 5P (08>12) Rail chiusi/Integrated rails/Geschlossener Reling/Railing integrés	SIYES/YA/OU	1	75 Kg
AUDI A3 Sportback 5P (12>20) Rail chiusi/Integrated rails/Geschlossener Reling/Railing integrés	SIYES/YA/OU	1	75 Kg
AUDI A4 Allroad SW (09>16) Rail aperti/Open rails/Mit Reling/Railing	SIYES/YA/OU	1	90 Kg
AUDI A4 Allroad SW (16>) Rail aperti/Open rails/Mit Reling/Railing	SIYES/YA/OU	1	90 Kg
AUDI A4 Avant SW (08>15) Rail chiusi/Integrated rails/Geschlossener Reling/Railing integrés	SIYES/YA/OU	1	75 Kg
AUDI A4 Avant SW (15>) Rail chiusi/Integrated rails/Geschlossener Reling/Railing integrés	SIYES/YA/OU	1	75 Kg
AUDI A6 Allroad SW (12>18) Rail aperti/Open rails/Mit Reling/Railing	SIYES/YA/OU	1	90 Kg
AUDI A6 Avant SW (05>11) Rail chiusi/Integrated rails/Geschlossener Reling/Railing integrés	SIYES/YA/OU	1	75 Kg
AUDI A6 Avant SW (11>18) Rail chiusi/Integrated rails/Geschlossener Reling/Railing integrés	SIYES/YA/OU	1	75 Kg
AUDI A6 Avant SW (18>) Rail chiusi/Integrated rails/Geschlossener Reling/Railing integrés	SIYES/YA/OU	1	75 Kg
AUDI Q3 SUV (11>18) Rail chiusi/Integrated rails/Geschlossener Reling/Railing integrés	SIYES/YA/OU	1	75 Kg
AUDI Q3 SUV (18>) Rail chiusi/Integrated rails/Geschlossener Reling/Railing integrés	SIYES/YA/OU	1	75 Kg
AUDI Q7 SUV (06>09) Rail chiusi/Integrated rails/Geschlossener Reling/Railing integrés	SIYES/YA/OU	1	75 Kg
AUDI Q7 SUV (09>15) Rail chiusi/Integrated rails/Geschlossener Reling/Railing integrés	SIYES/YA/OU	1	75 Kg
BMW Serie 2 Active Tourer MPV (14>) Rail chiusi/Integrated rails/Geschlossener Reling/Railing integrés	SIYES/YA/OU	1	75 Kg
BMW Serie 2 Gran Tourer MPV (15>) Rail chiusi/Integrated rails/Geschlossener Reling/Railing integrés	SIYES/YA/OU	1	75 Kg
BMW Serie 3 Touring SW (10>12) Rail chiusi/Integrated rails/Geschlossener Reling/Railing integrés	SIYES/YA/OU	1	75 Kg
BMW Serie 3 Touring SW (12>19) Rail chiusi/Integrated rails/Geschlossener Reling/Railing integrés	SIYES/YA/OU	1	75 Kg
BMW Serie 5 Touring SW (10>17) Rail chiusi/Integrated rails/Geschlossener Reling/Railing integrés	SIYES/YA/OU	1	75 Kg
BMW X1 SUV (09>15) Rail chiusi/Integrated rails/Geschlossener Reling/Railing integrés	SIYES/YA/OU	1	60 Kg
BMW X1 SUV (15>) Rail chiusi/Integrated rails/Geschlossener Reling/Railing integrés	SIYES/YA/OU	1	75 Kg
BMW X3 SUV (10>17) Rail chiusi/Integrated rails/Geschlossener Reling/Railing integrés	SIYES/YA/OU	1	75 Kg
BMW X5 SUV (07>13) Rail chiusi/Integrated rails/Geschlossener Reling/Railing integrés	SIYES/YA/OU	1	75 Kg
CADILLAC SRX SUV (10>16) Rail aperti/Open rails/Mit Reling/Railing	SIYES/YA/OU	2	90 Kg
CHEVROLET / DAEWOO Captiva SUV (06>15) Rail aperti/Open rails/Mit Reling/Railing	SIYES/YA/OU	2	90 Kg
CHEVROLET / DAEWOO Cruze SW (08>16) Rail aperti/Open rails/Mit Reling/Railing	NO/NO/NEIN/NON	1	90 Kg
CITROËN C3 Picasso MPV (09>17) Rail aperti/Open rails/Mit Reling/Railing	SIYES/YA/OU	1	60 Kg
CITROËN C4 Aircross SUV (12>17) Rail chiusi/Integrated rails/Geschlossener Reling/Railing integrés	SIYES/YA/OU	2	75 Kg
CITROËN C5 II Tourer SW (08>17) Rail aperti/Open rails/Mit Reling/Railing	NO/NO/NEIN/NON	1	75 Kg
CUPRA Ateca SUV (18>) Rail aperti/Open rails/Mit Reling/Railing	SIYES/YA/OU	2	75 Kg
DR DR 5 SUV (07>18) Rail aperti/Open rails/Mit Reling/Railing	SIYES/YA/OU	2	75 Kg
FIAT 500X SUV (15>) Rail chiusi/Integrated rails/Geschlossener Reling/Railing integrés	NO/NO/NEIN/NON	1	75 Kg
FIAT Panda II 5P (03>12) Rail aperti/Open rails/Mit Reling/Railing	NO/NO/NEIN/NON	2	50 Kg
FIAT Panda III 5P (12>) Rail chiusi/Integrated rails/Geschlossener Reling/Railing integrés	SIYES/YA/OU	2	75 Kg
FIAT Panda III Cross 5P (14>) Rail aperti/Open rails/Mit Reling/Railing	SIYES/YA/OU	2	55 Kg
FORD Edge SUV (16>) Rail chiusi/Integrated rails/Geschlossener Reling/Railing integrés	SIYES/YA/OU	2	75 Kg
FORD Focus III SW (11>18) Rail chiusi (no rail in plastica)/Integrated rails (no plastic rails)/Geschlossener Reling (keine Kunststoff Reling)/Railing integrés (ne pas de rails en matière plastique)	SIYES/YA/OU	1	75 Kg
FORD Focus IV SW (18>) Rail chiusi/Integrated rails/Geschlossener Reling/Railing integrés	SIYES/YA/OU	1	75 Kg
FORD Focus IV Active 5P (19>) Rail chiusi/Integrated rails/Geschlossener Reling/Railing integrés	SIYES/YA/OU	1	75 Kg
FORD Focus IV SW (18>) Rail chiusi/Integrated rails/Geschlossener Reling/Railing integrés	NO/NO/NEIN/NON	1	75 Kg
HONDA Civic IX Tourer SW (13>17) Rail chiusi/Integrated rails/Geschlossener Reling/Railing integrés	SIYES/YA/OU	1	75 Kg
HYUNDAI ix35 SUV (10>15) Rail chiusi/Integrated rails/Geschlossener Reling/Railing integrés	SIYES/YA/OU	2	60 Kg
HYUNDAI Kona SUV (17>) Rail chiusi/Integrated rails/Geschlossener Reling/Railing integrés	SIYES/YA/OU	2	60 Kg
HYUNDAI Tucson III SUV (15>18) Rail chiusi/Integrated rails/Geschlossener Reling/Railing integrés	SIYES/YA/OU	2	75 Kg
KIA Carens MPV (13>18) Rail chiusi/Integrated rails/Geschlossener Reling/Railing integrés	SIYES/YA/OU	2	75 Kg
KIA Ceed II Sporty Wagon SW (12>18) Rail chiusi/Integrated rails/Geschlossener Reling/Railing integrés	SIYES/YA/OU	2	60 Kg
KIA Niro SUV (16>) Rail chiusi/Integrated rails/Geschlossener Reling/Railing integrés	SIYES/YA/OU	2	75 Kg
KIA Sportage III SUV (10>15) Rail chiusi/Integrated rails/Geschlossener Reling/Railing integrés	SIYES/YA/OU	2	60 Kg
KIA Sportage IV SUV (16>21) Rail chiusi/Integrated rails/Geschlossener Reling/Railing integrés	SIYES/YA/OU	2	75 Kg
MERCEDES Classe C SW (07>14) Rail aperti/Open rails/Mit Reling/Railing	SIYES/YA/OU	1	75 Kg
MERCEDES Classe E SW (09>16) Rail aperti/Open rails/Mit Reling/Railing	SIYES/YA/OU	1	90 Kg
MERCEDES GLA SUV (13>20) Rail chiusi/Integrated rails/Geschlossener Reling/Railing integrés	SIYES/YA/OU	1	75 Kg
MERCEDES GLC SUV (15>) Rail chiusi/Integrated rails/Geschlossener Reling/Railing integrés	SIYES/YA/OU	1	75 Kg
MINI Countryman 5P (10>16) Rail chiusi/Integrated rails/Geschlossener Reling/Railing integrés	SIYES/YA/OU	1	60 Kg
MINI Countryman 5P (17>) Rail aperti/Open rails/Mit Reling/Railing	SIYES/YA/OU	1	90 Kg
MITSUBISHI ASX SUV (10>) Rail chiusi/Integrated rails/Geschlossener Reling/Railing integrés	SIYES/YA/OU	2	75 Kg
MITSUBISHI Outlander III SUV (12>) Rail chiusi/Integrated rails/Geschlossener Reling/Railing integrés	SIYES/YA/OU	2	75 Kg
NISSAN Qashqai II SUV (13>21) Rail aperti/Open rails/Mit Reling/Railing	SIYES/YA/OU	2	90 Kg
NISSAN X-Trail III SUV (14>) Rail aperti/Open rails/Mit Reling/Railing	SIYES/YA/OU	1	90 Kg
OPEL Astra H SW (04>10) Rail chiusi/Integrated rails/Geschlossener Reling/Railing integrés	SIYES/YA/OU	1	75 Kg
OPEL Astra J Sport Tourer SW (11>15) Rail chiusi/Integrated rails/Geschlossener Reling/Railing integrés	SIYES/YA/OU	1	75 Kg
OPEL Insignia A Sports Tourer SW (09>17) Rail chiusi/Integrated rails/Geschlossener Reling/Railing integrés	SIYES/YA/OU	1	75 Kg
OPEL Mokka A SUV (12>19) Rail chiusi/Integrated rails/Geschlossener Reling/Railing integrés	SIYES/YA/OU	1	75 Kg
OPEL Mokka X SUV (16>19) Rail chiusi/Integrated rails/Geschlossener Reling/Railing integrés	SIYES/YA/OU	1	75 Kg
OPEL Vectra C SW (03>05) Rail chiusi/Integrated rails/Geschlossener Reling/Railing integrés	SIYES/YA/OU	1	75 Kg
OPEL Vectra C SW (06>08) Rail chiusi/Integrated rails/Geschlossener Reling/Railing integrés	SIYES/YA/OU	1	75 Kg
OPEL Vectra B MPV (05>15) Rail chiusi/Integrated rails/Geschlossener Reling/Railing integrés	SIYES/YA/OU	1	75 Kg
OPEL Zafira C MPV (11>19) Rail chiusi/Integrated rails/Geschlossener Reling/Railing integrés	SIYES/YA/OU	1	75 Kg
PEUGEOT 3008 II MPV (16>) Rail chiusi/Integrated rails/Geschlossener Reling/Railing integrés	SIYES/YA/OU	2	75 Kg
PEUGEOT 308 II SW (14>21) Rail chiusi/Integrated rails/Geschlossener Reling/Railing integrés	SIYES/YA/OU	1	75 Kg
PEUGEOT 5008 II MPV (17>) Rail chiusi/Integrated rails/Geschlossener Reling/Railing integrés	SIYES/YA/OU	2	75 Kg
PEUGEOT 508 I SW (11>18) Rail chiusi/Integrated rails/Geschlossener Reling/Railing integrés	SIYES/YA/OU	2	75 Kg
RENAULT Grand Scenic IV MPV (16>) 7 posti/rail chiusi/7 seats/integrated rails/7 Sitzer/geschlossener Reling/7 places/railing integrés	NO/NO/NEIN/NON	1	75 Kg
RENAULT Kadjar SUV (15>) Rail chiusi/Integrated rails/Geschlossener Reling/Railing integrés	SIYES/YA/OU	1	75 Kg
RENAULT Koleos II SUV (17>) Rail chiusi/Integrated rails/Geschlossener Reling/Railing integrés	SIYES/YA/OU	1	75 Kg
RENAULT Megane III Sportour / Grandtour SW (09>16) Rail aperti/Open rails/Mit Reling/Railing	SIYES/YA/OU	2	75 Kg
RENAULT Megane IV Sporter SW (16>) Rail chiusi/Integrated rails/Geschlossener Reling/Railing integrés	NO/NO/NEIN/NON	1	75 Kg

	(IT) INSERTO (GB) INSERT (E) CUNA (D) DUBEL (F) TAMPON (NL) INVOEGSTUK (H) BESZURAS (PL) WKŁADKA (SLO) VLOŽKA (HR) UMETAK	(IT) TIRANTE (GB) COUPLER (E) TIRANTE (D) KOPPLER (F) TIRANT (NL) TREKSTANG (H) RÖGZÍTŐ BETÉT (PL) ŁAPKA (SLO) SPOJ (HR) ZAKAČKA	(IT) PORTATA MAX (GB) MAX LOAD (E) CARGA MÁXIMA (D) MAXIMALE TRAGLAST (F) CHARGE MAXIMALE (NL) BELASTING (H) TERHERÁS (PL) ŁADOWNOŚĆ (SLO) VRHUNSKA NOSILNOST (HR) NOSIVOST
RENAULT Talisman Sporter SW (16>) Rail chiusi/Integrated rails/Geschlossener Reling/Railing intégrés	SIYESYAYOUI	2	75 Kg
SEAT Alhambra II MPV (10>21) Rail aperti/Open rails/Mit Reling/Railing	SIYESYAYOUI	1	90 Kg
SEAT Altea Freetrack MPV (07>15) Rail chiusi/Integrated rails/Geschlossener Reling/Railing intégrés	SIYESYAYOUI	1	75 Kg
SEAT Altea XL MPV (06>15) Rail chiusi/Integrated rails/Geschlossener Reling/Railing intégrés	SIYESYAYOUI	1	75 Kg
SEAT Arona SUV (17>) Rail aperti/Open rails/Mit Reling/Railing	SIYESYAYOUI	1	75 Kg
SEAT Ateca SUV (16>) Rail aperti/Open rails/Mit Reling/Railing	SIYESYAYOUI	2	75 Kg
SEAT Ibiza ST SW (10>17) Rail chiusi/Integrated rails/Geschlossener Reling/Railing intégrés	SIYESYAYOUI	1	75 Kg
SEAT Leon III ST SW (13>20) Rail chiusi/Integrated rails/Geschlossener Reling/Railing intégrés	SIYESYAYOUI	1	75 Kg
SEAT Leon III X-PERIENCE SW (15>20) Rail chiusi/Integrated rails/Geschlossener Reling/Railing intégrés	SIYESYAYOUI	1	75 Kg
SEAT Terraco SUV (18>) Rail aperti/Open rails/Mit Reling/Railing	SIYESYAYOUI	1	75 Kg
SKODA Karoq SUV (17>) Rail aperti/Open rails/Mit Reling/Railing	SIYESYAYOUI	1	75 Kg
SKODA Kodiaq SUV (17>) Rail aperti/Open rails/Mit Reling/Railing	NO/NO/NEIN/NON	2	75 Kg
SKODA Octavia IV SW (20>) Rail chiusi/Integrated rails/Geschlossener Reling/Railing intégrés	SIYESYAYOUI	1	75 Kg
SKODA Superb III Wagon SW (15>) Rail aperti/Open rails/Mit Reling/Railing	SIYESYAYOUI	1	90 Kg
SUZUKI SX4 S-Cross 5P (13>21) Rail chiusi/Integrated rails/Geschlossener Reling/Railing intégrés	SIYESYAYOUI	1	75 Kg
SUZUKI Vitara SUV (15>) Rail chiusi/Integrated rails/Geschlossener Reling/Railing intégrés	SIYESYAYOUI	2	75 Kg
VOLKSWAGEN Cross Polo V 5P (10>17) Rail aperti/Open rails/Mit Reling/Railing	SIYESYAYOUI	1	90 Kg
VOLKSWAGEN Cross Up! 5P (14>19) Rail aperti/Open rails/Mit Reling/Railing	SIYESYAYOUI	1	90 Kg
VOLKSWAGEN Golf Sportsvan MPV (14>20) Rail aperti/Open rails/Mit Reling/Railing	SIYESYAYOUI	2	90 Kg
VOLKSWAGEN ID.4 SUV (20>) Rail chiusi/Integrated rails/Geschlossener Reling/Railing intégrés	SIYESYAYOUI	1	75 Kg
VOLKSWAGEN Passat VIII Variant SW (14>) Rail chiusi/Integrated rails/Geschlossener Reling/Railing intégrés	SIYESYAYOUI	1	75 Kg
VOLKSWAGEN T-Cross SUV (18>) Rail aperti/Open rails/Mit Reling/Railing	NO/NO/NEIN/NON	1	90 Kg
VOLKSWAGEN Tiguan I SUV (07>16) Rail aperti/Open rails/Mit Reling/Railing	SIYESYAYOUI	2	90 Kg
VOLKSWAGEN Tiguan II SUV (16>) Rail aperti/Open rails/Mit Reling/Railing	SIYESYAYOUI	1	90 Kg
VOLKSWAGEN Tiguan II SUV (16>) Rail aperti/Open rails/Mit Reling/Railing	SIYESYAYOUI	1	90 Kg
VOLKSWAGEN Touran II MPV (15>) Rail aperti/Open rails/Mit Reling/Railing	NO/NO/NEIN/NON	1	75 Kg
VOLVO V50 SW (04>12) Rail aperti/Open rails/Mit Reling/Railing	SIYESYAYOUI	1	75 Kg
VOLVO V60 I SW (10>18) Rail chiusi/Integrated rails/Geschlossener Reling/Railing intégrés	SIYESYAYOUI	1	75 Kg
VOLVO V60 I Cross Country SW (16>18) Rail chiusi/Integrated rails/Geschlossener Reling/Railing intégrés	SIYESYAYOUI	1	75 Kg
VOLVO V90 SW (16>) Rail chiusi/Integrated rails/Geschlossener Reling/Railing intégrés	SIYESYAYOUI	1	90 Kg
VOLVO V90 Cross Country SW (16>) Rail chiusi/Integrated rails/Geschlossener Reling/Railing intégrés	SIYESYAYOUI	1	90 Kg
VOLVO XC60 I SUV (10>17) Rail chiusi/Integrated rails/Geschlossener Reling/Railing intégrés	SIYESYAYOUI	2	90 Kg
VOLVO XC60 II SUV (17>) Rail chiusi/Integrated rails/Geschlossener Reling/Railing intégrés	SIYESYAYOUI	2	90 Kg
VOLVO XC90 II SUV (15>) Rail aperti/Open rails/Mit Reling/Railing	SIYESYAYOUI	1	90 Kg
VOLVO XC90 II SUV (15>) Rail chiusi/Integrated rails/Geschlossener Reling/Railing intégrés	SIYESYAYOUI	1	90 Kg